

MOIL CHISEL DEV 995 762 PR – STEEL – EARLY MEDIEVAL TIMES – SWITZERLAND

Artefact name	Moil chisel DEV 995 762 PR
Authors	Marianne. Senn (Empa, Dübendorf, Zurich, Switzerland) & Christian. Degriigny (HE-Arc CR, Neuchâtel, Neuchâtel, Switzerland)
Url	/artefacts/1485/

∨ The object



Credit HE-Arc CR.

Fig. 1: Moil chisel (after Eschenlohr et al. 2007, 265, 302-303),

∨ Description and visual observation

Description of the artefact	Moil chisel, the square shaft is rounded near the point, the head is concave and shows traces of flattening (Fig. 1). The black colour of the surface is due to the conservation treatment (see below).
Type of artefact	Tool
Origin	Settlement Develier, Courtételle, Jura, Switzerland
Recovering date	Excavated in 1995, farm 1
Chronology category	Early medieval times
chronology tpq	<input type="text" value="550"/> A.D. ∨
chronology taq	<input type="text" value="750"/> A.D. ∨
Chronology comment	
Burial conditions / environment	Soil
Artefact location	Office de la Culture, Porrentruy, Jura
Owner	Office de la Culture, Porrentruy, Jura
Inv. number	DEV 995 762 PR
Recorded conservation data	Conserved between 1995 and 2000: desiccation below 80°C, mechanical cleaning, passivation with tannic acid and protection with Paraloid B72® (Eschenlohr et al. 2007, 75).

Complementary information

None.

∨ Study area(s)

Fig. 2: Location of sampling areas,



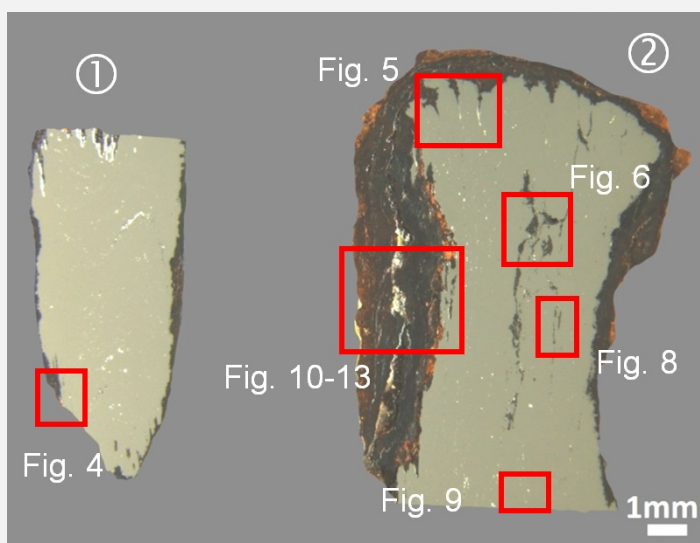
Credit HE-Arc CR.

∨ Binocular observation and representation of the corrosion structure

None.

∨ MiCorr stratigraphy(ies) – Bi

∨ Sample(s)



Credit HE-Arc CR.

Fig. 3: Micrograph of the cross-sections of samples 1 and 2 taken from the moil chisen showing the location of Figs. 4 to 6 and 8 to 13,

Description of sample

Two samples were taken on both extremities of the chisel (Fig. 2). They show the remaining metal covered by thick and cracked corrosion crusts (Fig. 3).

Alloy

Steel

Technology

Welded

Lab number of sample

DEV 762

Sample location

HE-Arc CR, Neuchâtel, Neuchâtel

Responsible institution

Office de la Culture, Porrentruy, Jura

Date and aim of sampling

2000, metallography and chemical composition of the metal



Complementary information

None.

Analyses and results

Analyses performed:

Metallography (nital etched and etched with Oberhoffer's reagent), Vickers hardness testing, LA-ICP-MS, SEM/EDS.

Non invasive analysis

None.

Metal

The remaining metal (M1) is a soft steel rich in Ni and As and P (P 0.1, Ni 0.2, As 0.1 mass%, Table 1). This composition and the ratio Ni/Co is typical for metal worked in the smithies of the settlement Develier-Courtételle. The unetched metal shows cracks filled with corrosion (Fig. 3). There are many slag inclusions forming rows in the metal and delineating the welding seams (Figs. 4 and 5). After the sample preparation numerous slag inclusions have lost their slag filling and are now empty (Fig. 4). The welding seams (M2) are preferentially attacked (Fig. 5). There are two types of slag inclusions (Table 2): along the central, primary welding seam we observe large inclusions with a structure of coarse and fine wüstite/FeO dendrites (Fig. 6) which can be interpreted as the result of an incomplete compacting of the metal in this strip. Small inclusions are mostly enclosed in a glassy matrix. The CaO and K₂O content in the large ones is remarkable: it is low and of similar value. This criterion is typical for ores, smelting slag and clay. This slag composition shows little or no influence of the charcoal in the composition, whereas in charcoal enriched slag the CaO often has the double concentration of K₂O. The small slag inclusions are extremely rich in CaO (8-31 mass%) and P₂O₅ (below detection limit-16 mass%). These high percentages cannot be explained by the presence of charcoal ash in the slag formation process. Here the question arises as to whether bones were used instead of charcoal for firing. Bones are rich in CaO and P₂O₅. In any case, neither the slag with small amounts, nor the slag with large amounts of these compounds is related to the ore used to produce the metal of Develier-Courtételle. In the early medieval period, central Jura pisolithic bean ore was smelted to produce iron. This ore is rich in alumina (ratio SiO₂/Al₂O₃ between 1 and 2) and titanium oxide with the typical trace elements V and Cr. The composition of the analysed slag inclusions does not resemble this pattern at all. Etching with Oberhoffer's reagent, which reveals the P repartition in the metal, clearly outlines the welding seams (M2). White areas are enriched in P whereas black areas contain P in lower concentrations. This etching clearly shows that the head of the tool was made from at least three welded strips, each containing several welding seams (Fig. 7). The middle strip shows welding mistakes (irregular middle zone), probably originating from primary welding (compacting the bloom). The tip of the tool was welded on, using several horizontally arranged metal strips. It was produced by first folding it onto itself, then welding it to the body, and finally by flattening it to form the tip. The number of the strips cannot be precisely defined. This technique is called butt-welding for the chisel head and piling or "edge to edge welding" (after Lang 1987) for the chisel point. After etching with nital the metal can be identified as a hypoeutectoid steel with an estimated C content of about 0.2-0.3 mass% for the head and 0.1-0.2 mass% for the tip (Fig. 8). The grain size is small and regular and shows recrystallization after annealing (Fig. 9). Segregations are visible near the welding lines in the form of low C content zones (M3, Fig. 8). The average hardness of the metal is HV1 155. The hardness of the tip is slightly lower but can be explained by the lower C content in this part.

Elements	V	Cr	Mn	P	Co	Ni	Cu	As	Ag	Ni/Co	C* mass%
Median M1 (head & tip) mg/kg	<	<	8	1000	620	1770	400	1400	3	2.9	0.2
Detection limit mg/kg	1	6	1	42	1	4	2	2	0.5	1	-
RSD1 %	-	-	51	39	9	5	73	21	134		

*visually estimated

Table 1: Chemical composition of the metal (<: below the detection limit). Method of analysis: LA-ICP-MS, Laboratory of Analytical Chemistry, Empa (for details see Devos et al. 2000).

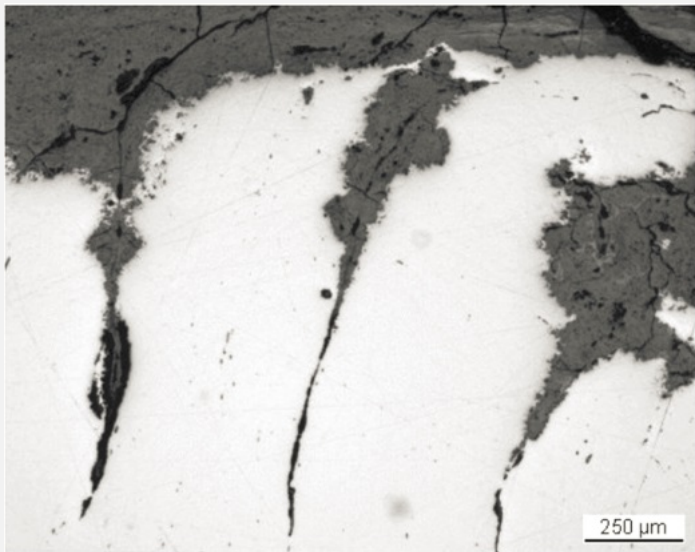
Structure	Origin	MgO	Al ₂ O ₃	SiO ₂	P ₂ O ₅	SO ₃	K ₂ O	CaO	TiO ₂	FeO	Total	SiO ₂ /Al ₂ O ₃
Dendrites in glass	Tip	1	4	28	5	<1	1	10	<	57	105	Around 7
Glass	Tip	1	4	26	16	<	1	22	<	31	101	Around 7
Coarse and fine dendrites in glass, welding seam	Tip	<	2	17	1	<	<1	1	<	84	106	Around 8
Glass	Tip	1	4	28	4	<	1	13	<	53	104	Around 7
Glass	Tip	1	4	44	1	<	1	31	<	8	90	Around 11
Coarse dendrites in glass, welding seam	Head	<	2	19	2	<	1	2	<	67	93	Around 9
Glass	Head	1	5	34	1	<	1	8	<	61	111	Around 7
Glass	Head	1	7	56	<	<	3	12	<1	17	97	Around 8

Table 2: Chemical composition of the slag inclusions (%; <: below the detection limit). Method of analysis: SEM/EDS, Laboratory of Analytical Chemistry, Empa.



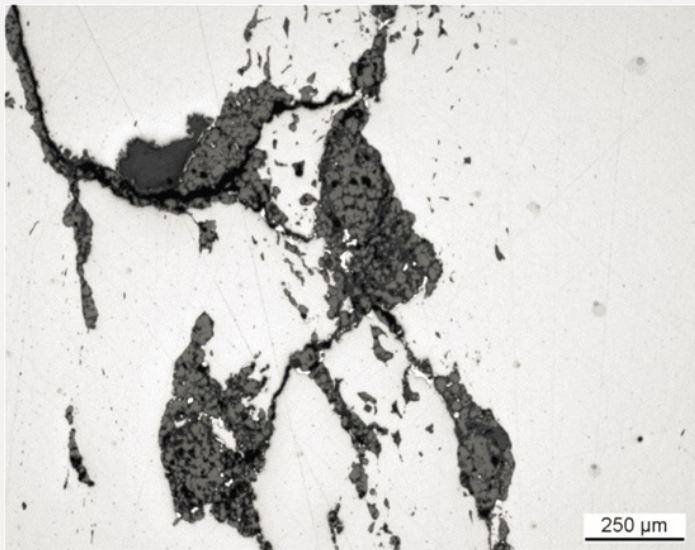
Credit HE-Arc CR.

Fig. 4: Micrograph of metal sample 1 from Fig. 3 (reversed picture, detail), unetched, bright field. Slag inclusions organized in rows mark the welding seams,



Credit HE-Arc CR.

Fig. 5: Micrograph of metal sample 2 from Fig. 3 (reversed picture, detail), unetched, bright field. Corrosion has penetrated along the welding seams,



Credit HE-Arc CR.

Fig. 6: Micrograph of metal sample 2 from Fig. 3 (reversed picture, detail), unetched, bright field. We observe large slag inclusions with a structure of coarse wüstite dendrites in a glassy matrix,

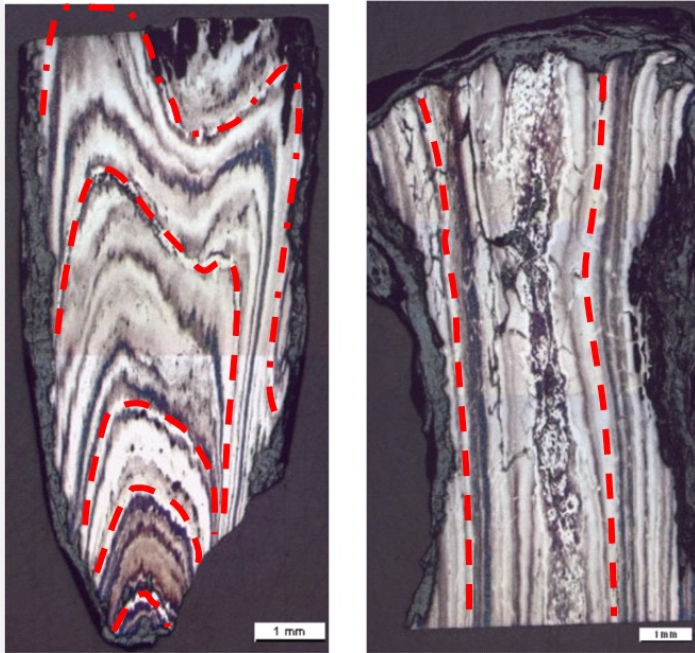


Fig. 7: Micrograph of metal samples 1 and 2, etched with Oberhoffer's reagent, bright field. The P segregation along the welding seams is outlined. The main welding seams are marked by red dotted lines,

Credit HE-Arc CR.

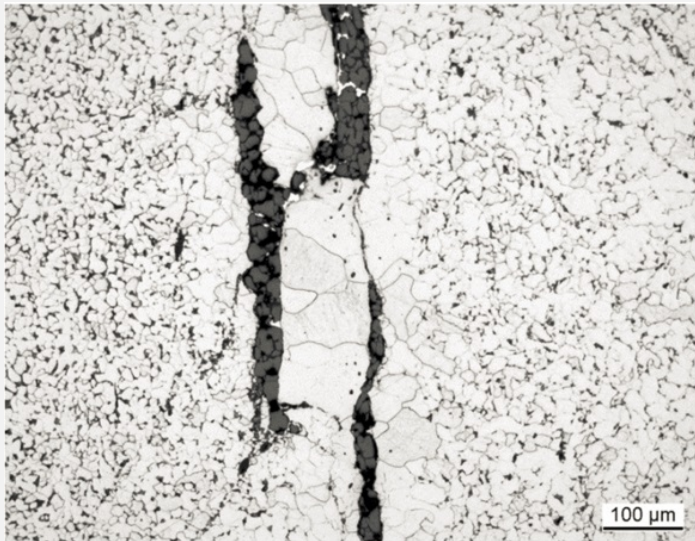


Fig. 8: Micrograph of metal sample 2 from Fig. 3 (detail), nital etched, bright field. We observe a hypoeutectoid steel including a ferritic zone surrounded by slag inclusions,

Credit HE-Arc CR.

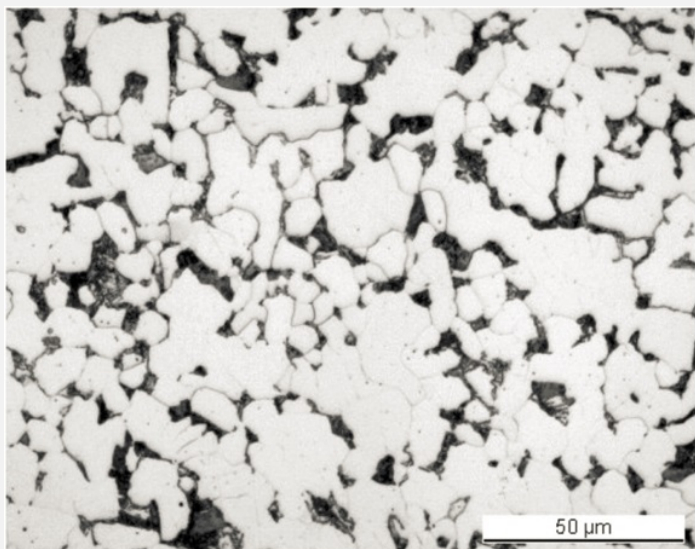


Fig. 9: Micrograph of metal sample 2 from Fig. 3 (detail), nital etched, bright field. We observe a hypoeutectoid steel with a structure of ferrite in white and pearlite in black,

Credit HE-Arc CR.

Microstructure

Recrystallized grain structure

First metal element

Fe

Complementary information

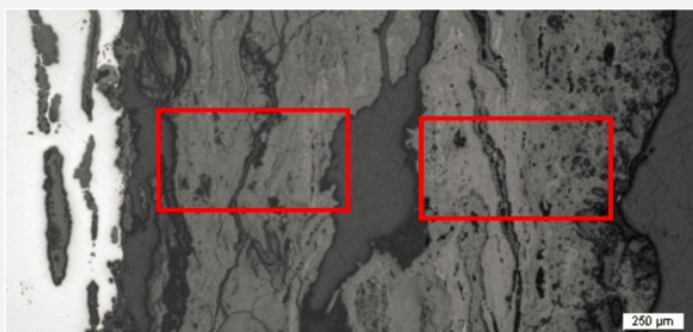
None.

Corrosion layers

The metal - corrosion products interface is irregular (Fig. 3) and the average thickness of the corrosion crust is about 0.6mm. However, on the left side of the sample taken from the head of the chisel (Fig. 3) the corrosion crust is thicker with an average thickness of about 2mm. This area is further detailed below (Figs. 10 and 11). The corrosion crust can be divided into several layers (CP1-CP4). In bright field, and in the BSE-mode of the SEM image, darker and lighter regions are visible (Figs. 10, 12 and 13). In this area the corrosion layer contains typical trace elements of the metal (As and P, Table 3). In polarised light we see a dark-red zone in which different grey zones are included (Fig. 12). The element mapping and the analyses show that at the metal - corrosion crust interface iron chlorides occur (Figs. 12 and Table 3, CP4 in Fig. 14). Only the outer zone, which has reacted with the soil, has a different colour (orange) and incorporates many rock inclusions (Si, Al and Ca) (Fig. 13 and Table 3, CP1 in Fig. 14).

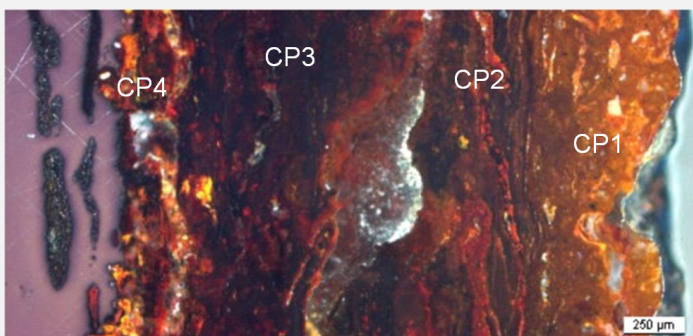
Elements	O	Al	Si	P	S	Cl	Ca	Fe	As	Total
Rim outside, orange, CP1, Fig. 13	28	2	6	<	<	<	<1	65	<	102
Orange zone, outside with little rock inclusions, CP1, Fig. 13	29	3	7	<	<	<	<	65	<	104
Light-grey, outside, CP2, Fig. 13	22	<	<1	<	<	<	<	75	<	98
Mixed zone, middle, CP3, Fig. 12	22	<	<	<	<	<	<	73	<	95
Dark-grey, inside, CP4, Fig. 12	24	<	<	<	2	2	<	74	<	102
Light-grey, inside, CM1, Fig. 12	22	<	<	<	<	<	<	73	<1	96
White, inside, M1	25	<	<	<	<	<	<	84	<1	110

Table 3: Chemical composition (mass %, <: below the detection limit) of the corrosion layers (from Figs. 11 to 13). Method of analysis: SEM/EDS, Laboratory of Analytical Chemistry, Empa.



Credit HE-Arc CR.

Fig. 10: Micrograph showing the metal - corrosion crust interface from Fig. 3 (reversed picture, detail), unetched, bright field. The areas selected for elemental chemical distributions (Fig. 12 (left) and Fig. 13 (right)) are marked by red rectangles.



Credit HE-Arc CR.

Fig. 11: Micrograph (same as Fig. 10) corresponding to the stratigraphy of Fig. 14, unetched, polarised light. From left to right: the metal in violet, the successive corrosion layers having a yellow (CP4), grey (CP3) to dark-red colour (CP2). The outer layer is orange-brown with quartz inclusions in white (CP1).

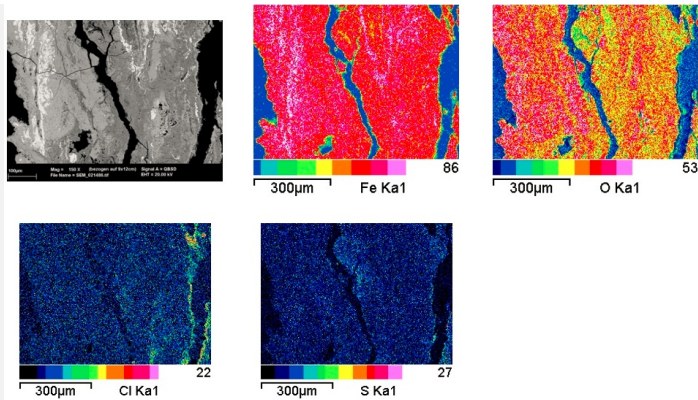


Fig. 12: SEM image, BSE-mode, and elemental chemical distribution of the selected area from Fig. 10 (reversed picture). Method of examination: SEM/EDS, Laboratory of Analytical Chemistry, Empa,

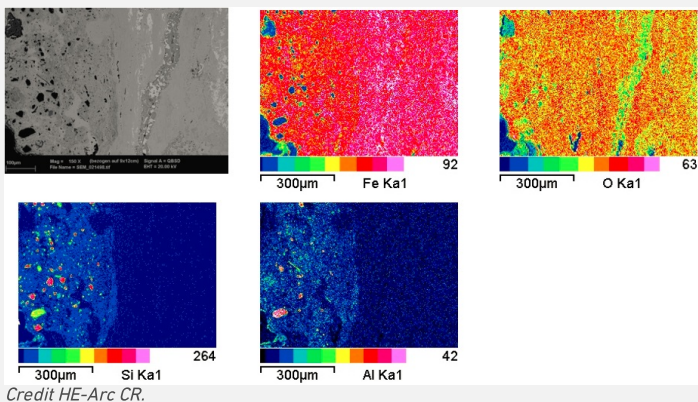


Fig. 13: SEM image, BSE-mode, and elemental chemical distribution of the selected area from Fig. 10 (reversed picture). Method of examination: SEM/EDS, Laboratory of Analytical Chemistry, Empa,

Corrosion form Uniform - transgranular
 Corrosion type Unknown

Complementary information

None.

✧ MiCorr stratigraphy(ies) – CS

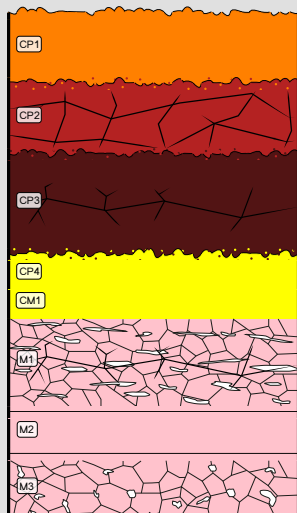


Fig. 14: Stratigraphic representation of sample 2 from the moil chisel in cross-section (dark field) using the MiCorr application. The characteristics of the strata are only accessible by clicking on the drawing that redirects you to the search tool by stratigraphy representation. This representation can be compared to Fig. 11, Credit HE-Arc CR.

✧ Synthesis of the binocular / cross-section examination of the corrosion structure

None.

∨ Conclusion

The chisel is forged from a medium-hard iron alloy. The hardened tip is missing. Both forging techniques used to produce the tool (butt-welding and edge-to-edge welding) are very sophisticated. The chemical composition of the metal is consistent with the iron worked in the smithies of the village Develier-Courtételle JU. The chemical composition of the slag inclusions does not indicate that the item was made of locally smelted bean ore. It seems that bones or bone ash were used when forging the chisel. The metal is severely attacked by corrosion. At the metal - corrosion crust interface an active corrosion front including chlorides is present. This is not surprising as no stabilisation treatment has been carried out. The part of the corrosion layer which has been examined seems to be complete. The limit of the original surface can be located by the presence of external markers such as sand grains and rock fragments (Si, Al) incorporated in the outer corrosion layers.

∨ References

References on object and sample

References object

1. Eschenlohr, L., Friedli, V., Robert-Charrue Linder, C., Senn, M. (2007) Develier-Courtételle. Un habitat mérovingien. Métallurgie du fer et mobilier métallique. Cahier d'archéologie jurassienne 14 (Porrentruy), 302-303.

References sample

2. Eschenlohr, L., Friedli, V., Robert-Charrue Linder, C., Senn, M. (2007) Develier-Courtételle. Un habitat mérovingien. Métallurgie du fer et mobilier métallique. Cahier d'archéologie jurassienne 14 (Porrentruy), 265.

References on analytic methods and interpretation

3. Lang, J. (1984) The technology of Celtic Iron Swords. In: The crafts of the blacksmith (ed. Scott, B.G. and Cleere, H.) Belfast, 61-72.