

# LEAD CAMES OF A STAINED GLASS WINDOW 52583 – PB SB ALLOY – UNKNOWN – SWITZERLAND

**Artefact name** Lead comes of a stained glass window 52583

**Authors** Alice Gerber. (Haute École Arc Neuchâtel, Neuchâtel, Neuchâtel, Switzerland)

**Url** /artefacts/1560/

## ∨ The object



Fig. 1: Stained glass panel "Stokar" both sides,

Credit Museum zu Allerheiligen.

## ∨ Description and visual observation

<b>Description of the artefact</b>	<p>Stained Glass panel from the 16th century representing prominent families of Schaffhausen (CH) through coat-of-arms. Object typically swiss called "Wappenscheiben".</p> <p>The object is made of incolor and colored glass (light blue, pink and red) decored with grisaille, silver yellow stain and blue enamel. The glass parts are crimped with lead-alloy comes. The comes are fastened to one another by welding points of a lead-tin alloy on both side of the panel (Fig. 1).</p>
<b>Type of artefact</b>	Supporting structure
<b>Origin</b>	Cames, Schaffhausen, Schaffhausen, Switzerland
<b>Recovering date</b>	Unknown
<b>Chronology category</b>	Unknown
<b>chronology tpq</b>	<input type="text" value="1501"/> A.D. ▼
<b>chronology taq</b>	<input type="text" value="1600"/> A.D. ▼

<b>Chronology comment</b>	16th century AD
<b>Burial conditions / environment</b>	Outdoor to indoor atmosphere
<b>Artefact location</b>	Museum zu Allerheiligen, Schaffhausen
<b>Owner</b>	Museum zu Allerheiligen, Schaffhausen
<b>Inv. number</b>	52583
<b>Recorded conservation data</b>	Restauration in 2009 by Urs Wohlgemuth (Boniswil)

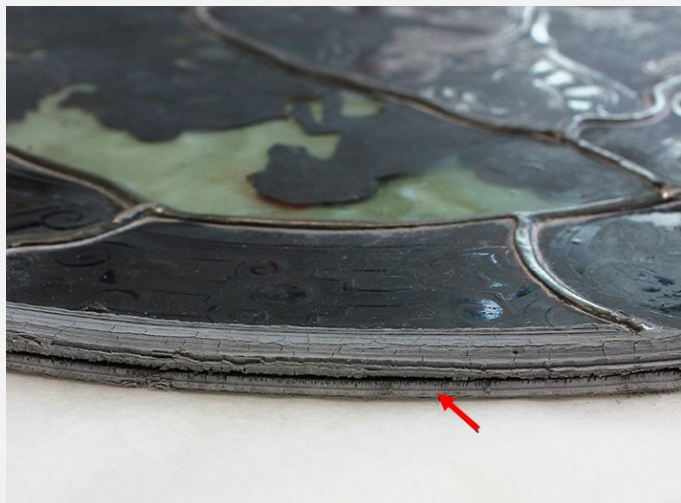
### Complementary information

In 2009 two stained glass panels were placed in a showcase for a permanent exhibition, the lead came were then in a good conservation condition. In 2018, the lead showed voluminous efflorescence of white, powdery corrosion products.

The environment of this showcase contained a high level of acetic acid. Lead being sensitive to organic acids, it corroded strongly. This is not new, but what is interesting here is that the two objects corroded in a very heterogeneous way. One lead came may be deformed and completely covered with bulky white efflorescences, and the one next to it shows no corrosion.

The "stokar" window, which is of interest here, was restored in 2008, just before it was put on display. The restoration consisted of replacing some of the lead came. Thus, while the object is dated to the 16th century, the replaced came were new when they entered the display case. In 2018, they were completely corroded. In comparison, the other stained glass panel, with older lead came, was placed in the same display case at the same time. For this second panel, the came are slightly corroded in 2018, but not as badly as those of the 'Stokar' panel. The metal chosen by the restorer reacted more strongly with the corrosive environment (the display case) than the historical metal.

### Study area(s)



*Credit Museum zu Allerheiligen.*

Fig. 2: Corroded "modern" lead came on the "Stokar" stained glass panel with location of the sampling area,



Credit Museum zu Allerheiligen.

Fig. 3: Detail of the corroded lead came,

∨ Binocular observation and representation of the corrosion structure

None.

∨ MiCorr stratigraphy(ies) – Bi

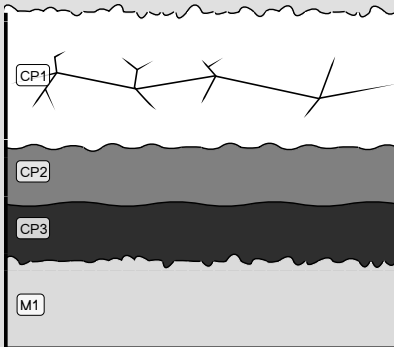


Fig. 4: Stratigraphic representation of the corrosion structure of the lead came observed macroscopically under binocular microscope using the MiCorr application. The characteristics of the strata are only accessible by clicking on the drawing that redirects you to the search tool by stratigraphy representation, Credit HE-Arc CR, A.Gerber.

∨ Sample(s)

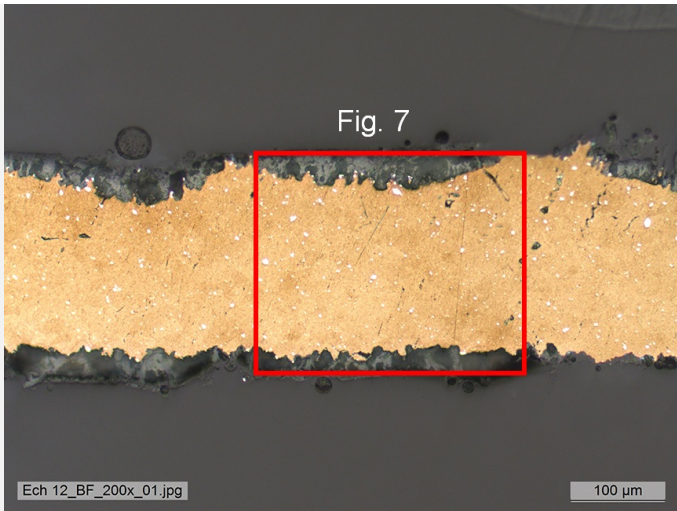


Fig. 5: Micrograph of the cross-section of the corroded lead came with location of Fig. 7, unetched, dark field. The grains of the metal are slightly visible, and the light-coloured dots in the alloy are inclusions,

Credit HE-Arc CR, A.Gerber.

<b>Description of sample</b>	The sample is a piece of metal taken from the corroded lead came of the stained glass (Fig. 2). This came was replaced during the 2009 restoration. The purpose was to understand why this new metal has been completely corroded in a few years (Fig. 2, 3 and 5), while the historical metal next to it is not affected at all.
<b>Alloy</b>	Pb Sb alloy
<b>Technology</b>	Cast and cold worked
<b>Lab number of sample</b>	None
<b>Sample location</b>	HE-Arc CR, Neuchâtel, Neuchâtel
<b>Responsible institution</b>	HE-Arc CR, Neuchâtel, Neuchâtel
<b>Date and aim of sampling</b>	None

#### Complementary information

None.

#### ∨ Analyses and results

Metallography: hand polishing (grit sizes 200, 500, 1000, 1200, 2500, with water), then machine polishing Struers® LaboForce-3 with diamond oil solution (grit sizes 3 μm and 1 μm). Finally, chemical and mechanical polishing (same machine), with Struers® OP-S solution (0.04 μm grit size) with 10% H2O2.

X-ray Fluorescence, in **General Metals** mode, acquisition time 60s (filters: M20/Lo20/Li20).

Fourier transform IR spectroscopy (FTIR) to identify the various corrosion products found on the object.

Scanning electron microscope/Energy-dispersive X-ray spectroscopy (SEM/EDX).

#### ∨ Non invasive analysis

XRF analyses of the different lead comes of the "Stokar" stained glass panel showed that the tin (Sn) content is very variable from one came to another (Fig. 6). Those with a very low Sn but a high Sb (1.4%) contents are much more corroded.

Fig. 6: XRF analyses of a selection of the comes,



Credit HE-Arc CR, A.Gerber.

∨ Metal

The lead alloy contains approximately 1.5% antimony. The grains of the metal are slightly visible, even without etching. The light-coloured dots in the alloy are Sb-rich inclusions (Fig. 7).

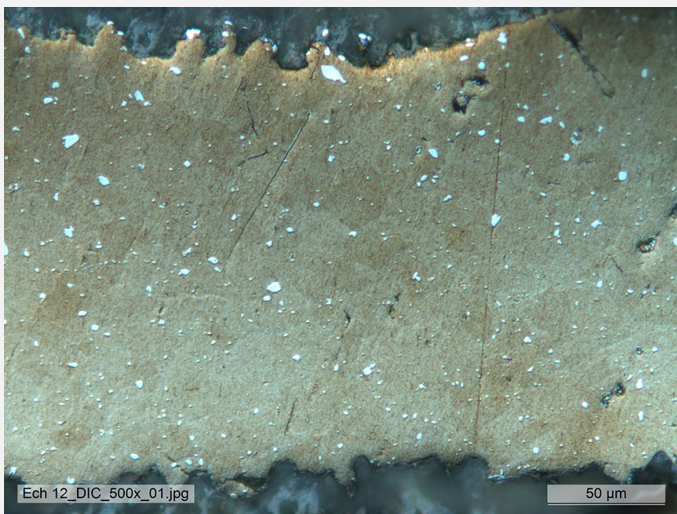


Fig. 7: Micrograph (detail of Fig. 5), unetched, dark field,

Credit HE-Arc CR, A.Gerber.

<b>Microstructure</b>	Polygonal grains with inclusions
<b>First metal element</b>	Pb
<b>Other metal elements</b>	Sb

Complementary information

None.

∨ Corrosion layers

Corrosion develops specifically on comes made of a lead-antimony alloy, where antimony inclusions constitute the cathode (0.150 V/SHE) versus lead (-0.125 V/SHE) which corrodes as an anode in presence of lead acetate (the electrolyte). Fig. 8 shows that corrosion does not attack the antimony nodules in the alloy, it progresses by mineralizing the lead around these nodules.

CP1 seems to be a heterogeneous compound as indicated on Figs. 8 and 9. It is heavily cracked (Fig. 9). EDX analyses do not indicate a significant difference in composition. The attack of lead by organic acids causes the formation of salts, such as lead acetate which are then transformed into basic lead carbonates by the action of CO<sub>2</sub> from the environment as indicated by FTIR analysis of CP1.

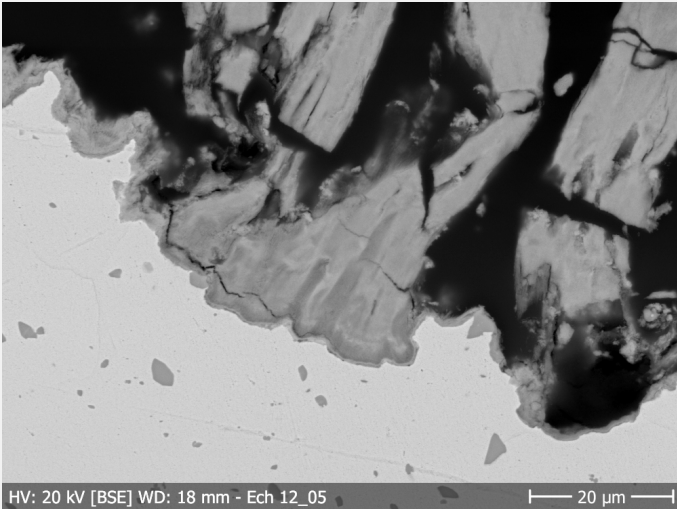


Fig. 9: SEM image (BSE mode) of the cross-section of the corroded lead came,

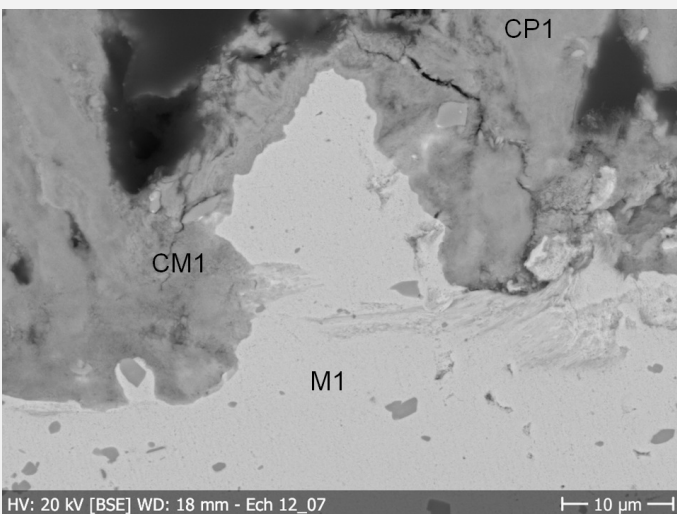


Fig. 8: SEM image (BSE mode) of a detail of the cross-section of the corroded lead came. The area in light grey is the metal, the corrosion is in darker grey with a blurred appearance. Sb-dots are dark grey. Corrosion progresses around them, without mineralising them,

<b>Corrosion form</b>	Uniform - transgranular
<b>Corrosion type</b>	Active corrosion of lead

#### Complementary information

None.

∞ MiCorr stratigraphy(ies) – CS

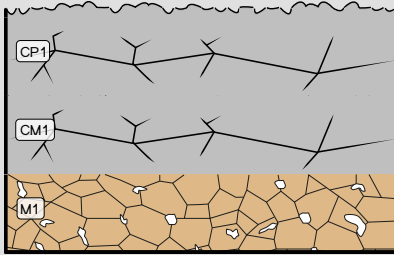


Fig. 10: Stratigraphic representation of the lead came in cross-section (dark field) using the MiCorr application with reference to Fig. 8. The characteristics of the strata are only accessible by clicking on the drawing that redirects you to the search tool by stratigraphy representation, Credit HE-Arc CR, A.Gerber.

∨ Synthesis of the binocular / cross-section examination of the corrosion structure

Fig. 11 shows an optimised stratigraphic representation of the corrosion structure. It is to be noted that CP1, CP2 and CP3 although visible on some cross-sections (Fig. 9) could not be differentiated by analysis.

The limit of the original surface lies somewhere in the corrosion layers. Antimony nodules are inferior markers of the limit of the original surface.

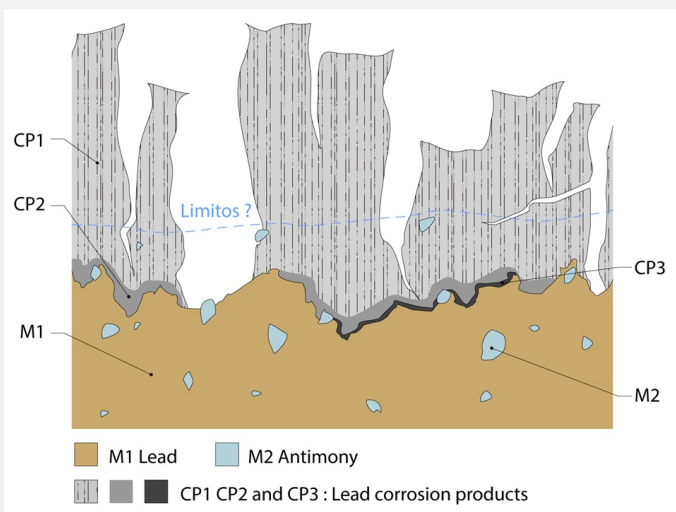


Fig. 11: Optimised stratigraphic representation of a corroded lead came integrating additional information based on the analyses carried out,

Credit HEI Arc, A.Gerber

∨ Conclusion

The lead came is a lead-antimony alloy. Lead is a metal that is very sensitive to organic acids. But it can be alloyed with elements that can either increase its resistance to corrosion (tin) or make it more sensitive to organic acids. Antimony (Sb) is such an element that enhances active corrosion due to the galvanic effect between this element and lead.

The lead came is heavily corroded and its original surface contained in the thick and very fragile corrosion layer might get lost easily in case of any physical shock.

∨ References

References on object and sample

*References object*

1. Hasler (2010). Die Schaffhauser Glasmalerei : des 16. bis 18. Jahrhunderts. Corpus Vitrearum, Vitrocentre Romont, Peter Lang, 2010.

### *References sample*

2. Gerber (2018). Corrosion du sertissage en plomb de vitraux - Recherches autour de la dégradation de deux objets dans leur vitrine au Museum zu Allerheiligen de Schaffhouse. Haute Ecole Arc Neuchâtel, travail de diplôme de Bachelor, non-publié, 2018.

### **References on analytic methods and interpretation**

3. Costa and Urban (2005). Lead and its alloys: metallurgy, deterioration and conservation. In *Studies in Conservation*, 50:sup1, 2005, 48-62.

4. Tétreault et al. (2003). Corrosion of copper and lead by formaldehyde, formic and acetic acid vapours, 4, *Studies in conservation*, 48, 4, 2003, 237-250.

5. Degriigny and Le Gall (1999). Conservation of ancient lead artifacts corroded in organic acid environments: electrolytic stabilisation / consolidation, *Studies in Conservation*, 44, 3, 1999, 157-169.