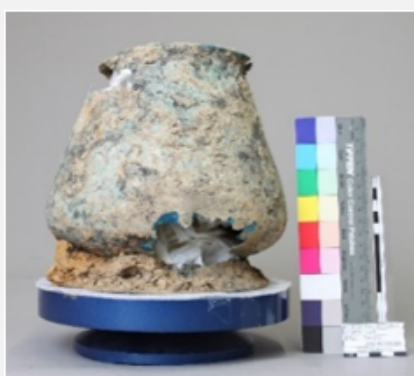


## SITULA EMT09-554.665 – TIN BRONZE – IRON AGE – SWITZERLAND

<b>Artefact name</b>	Situla EMT09-554.665
<b>Authors</b>	Christian. Degriigny (HE-Arc CR, Neuchâtel, Neuchâtel, Switzerland) & Marie-Jeanne. Scholl (HE-Arc CR, Neuchâtel, Neuchâtel, Switzerland) & Valentin. Boissonnas (HE-Arc CR, Neuchâtel, Neuchâtel, Switzerland)
<b>Url</b>	/artefacts/340/

### ∨ The object



Credit HE-Arc CR, M-J.Scholl.

Fig. 1: Tin bronze Celtic situla (Archeodunum (Gollion), 2009) inverted as found in situ,

### ∨ Description and visual observation

<b>Description of the artefact</b>	Copper alloy situla (Fig. 1). Attached to two riveted iron loops is an iron handle terminating in two swan heads (not shown here). Dimensions of the main body: Hmax = 340mm, Ømax = 220mm.
<b>Type of artefact</b>	Situla
<b>Origin</b>	Mormont sanctuary, La Sarraz, Vaud, Switzerland
<b>Recovering date</b>	Excavated in 2011
<b>Chronology category</b>	Iron Age
<b>chronology tpq</b>	<input type="text" value="140"/> B.C. ▾
<b>chronology taq</b>	<input type="text" value="30"/> B.C. ▾
<b>Chronology comment</b>	La Tène D (140BC _ 30BC)
<b>Burial conditions / environment</b>	Soil
<b>Artefact location</b>	Musée cantonal d'archéologie et d'histoire, Lausanne, Vaud
<b>Owner</b>	Musée cantonal d'archéologie et d'histoire, Lausanne, Vaud
<b>Inv. number</b>	EMT09/554.665
<b>Recorded conservation data</b>	Not conserved

## Complementary information

The size and quality of the object makes it likely that it was reserved for important occasions or for ritual use. Secondary use could be a votive offering. Burial condition: inside a 3 meters deep hole in upside-down position.

### Study area(s)



Fig. 2: Location of sampling area and sample selected from detached fragments,

Credit HE-Arc CR, M-J.Scholl.

### Binocular observation and representation of the corrosion structure

The schematic representation below gives an overview of the corrosion layers encountered on the situla from a first visual macroscopic observation (additional e and i within the coding correspond to strata in contact with the environment (e) and internal strata (i)).

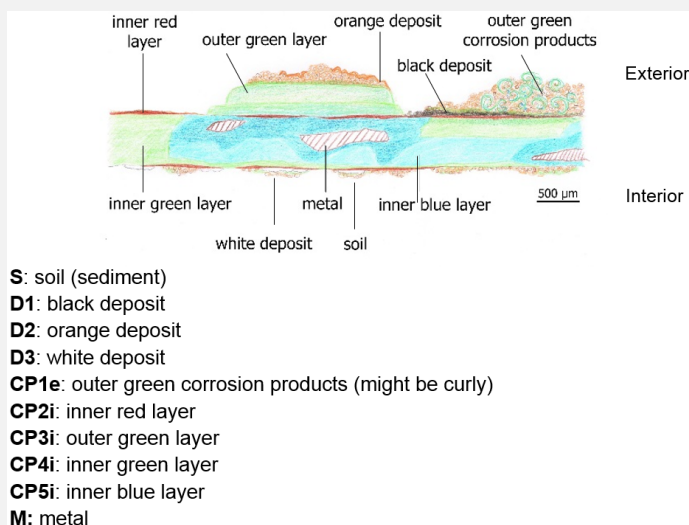


Fig. 3: Stratigraphic representation of the situla in cross-section by macroscopic observation,

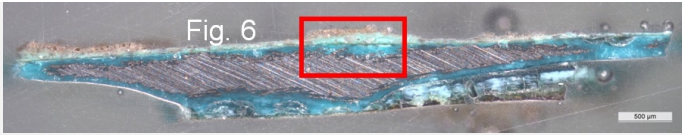
- S:** soil (sediment)
- D1:** black deposit
- D2:** orange deposit
- D3:** white deposit
- CP1e:** outer green corrosion products (might be curly)
- CP2i:** inner red layer
- CP3i:** outer green layer
- CP4i:** inner green layer
- CP5i:** inner blue layer
- M:** metal

Credit HE-Arc CR, M-J.Scholl.

### MiCorr stratigraphy(ies) – Bi

### Sample(s)

Fig. 4: Micrograph of the cross-section showing the location of Fig. 6. Unetched, dark field, 50x,



Credit HE-Arc CR, M-J.Scholl.

<b>Description of sample</b>	The sample was cut from a detached fragment of the upper part of the main body of the situla in Fig. 2. The cross-section is representative of the entire thickness (0.5 mm) of the object's body where on the outside there is a thicker accumulation of corrosion including curly malachite clusters (Fig. 3). A metallic core is still present inside the corrosion products layers (Fig. 4).
<b>Alloy</b>	Tin Bronze
<b>Technology</b>	Cold worked (hammering on a counter-mould), annealed but no final annealing
<b>Lab number of sample</b>	None
<b>Sample location</b>	HE-Arc CR, Neuchâtel, Neuchâtel
<b>Responsible institution</b>	Musée cantonal d'archéologie et d'histoire, Lausanne, Vaud
<b>Date and aim of sampling</b>	2014, metallography and chemical analyses (FTIR, SEM-EDS)

**Complementary information**

Nothing to report.

∨ Analyses and results

**Analyses performed:**

Metallography (etched with ferric chloride reagent), SEM-EDS, FTIR, Raman spectroscopy and XRD.

∨ Non invasive analysis

∨ Metal

The remaining metal is a dense tin bronze (Fig. 7, Table 1), showing no inclusion. In bright field, the etched alloy shows a structure principally consisting of polygonal alpha phase grains (Fig. 8). Some of the grains include twin lines (Fig. 9). The presence of strain lines (slip lines) indicates a final cold work without annealing (Fig. 9).

Elements	Cu	Sn
mass%	90	10

Table 1: Chemical composition of the metal. Method of analysis: SEM-EDS, Lab of Electronic Microscopy and Microanalysis, IMA (Néode), HEI Arc.

Fig. 7: SEM image, BSE-mode, of the metal sample from Fig. 4. Area of Fig. 8 is marked by a rectangle,

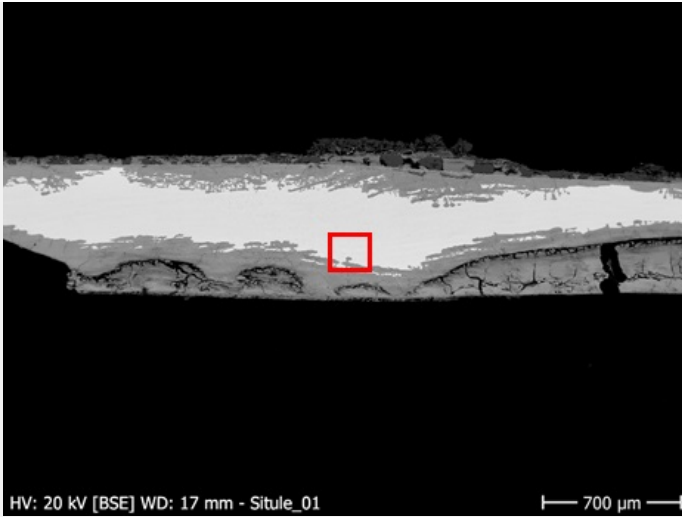


Fig. 8: Micrograph of the etched metal structure from Fig. 7 (detail), etched, bright field, 50x. The alpha phase of the alloy shows polygonal grains. Area of Fig. 9 is marked by a rectangle,

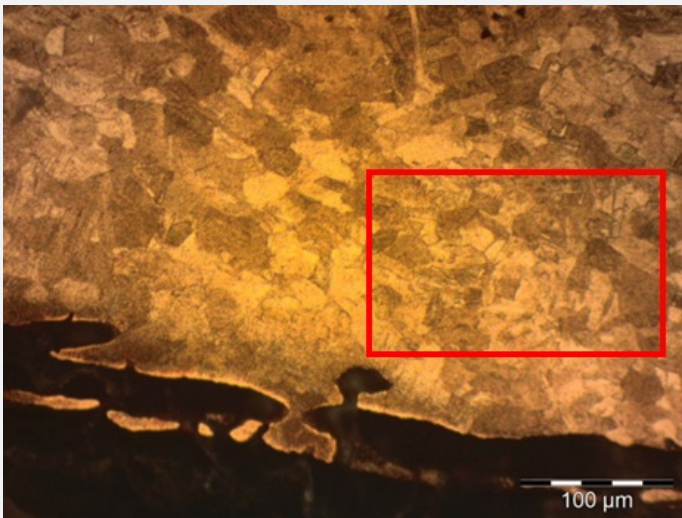


Fig. 9: Micrograph of the selected area of Fig. 8, etched, bright field, 500x. The grains show both twin and strain lines,



<b>Microstructure</b>	Polygonal grain with twin and strain lines
<b>First metal element</b>	Cu
<b>Other metal elements</b>	Sn

#### Complementary information

Nothing to report.

## Corrosion layers

The corrosion crust is heterogeneous and has in places completely replaced the metal. The metal – corrosion products interface is irregular due to transgranular corrosion (Figs 7-8). In most cases, the corrosion crust can be divided in three main layers: an inner compact blue layer directly on the metal core (CP5, Figs. 6, 10 and 11 and CP3, Fig. 5). In areas of extensive corrosion this blue layer coexists with a friable green layer (CP4, Figs. 6, 10 and 11 and CP2, Fig. 5). Depending on the area either a very fine dark green (CP3, Fig. 6 and Fig. 10) or red corrosion layer (CP2, Fig. 6 and Fig. 10) marks the limit of the original surface. It is followed by an external fourth layer, consisting of friable and sometimes curly pale green corrosion products intermingled with soil products (CP1, Fig. 6 and Fig. 10 and 13). In heavily worked and fragile parts of the object a cleavage between the inner layers of blue and green corrosion is present, rendering the green corrosion vulnerable to loss (Fig. 11).

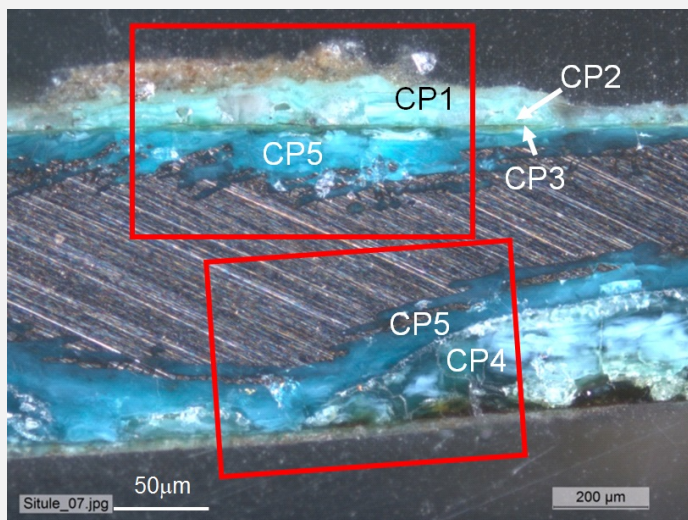
There are 2 stratigraphies (Fig. 5 corresponding to the interior face of the situla and Fig. 6 to its exterior face). The strata are similar in composition but their coding is different: CP1 to CP3 in Fig. 5 correspond to CP3 to CP5 in Fig. 6. Since the stratigraphy of Fig. 6 is more complete, the composition of each of its strata is given below.

The inner layers (CP3-CP5) are Sn and O-rich and depleted in Cu (Table 2). The outer layers (CP1 and CP2) are Cu and O-rich, contain no Sn, and are contaminated with Ca, Si, Al and Fe coming from the soil (Fig. 12). The colour of the corrosion crust varies according to the content of Sn (the more Sn, the darker green or blue the corrosion). FTIR on the inner blue (CP5 and Fig. 14) and outer green (CP1 and Fig. 15) layers were difficult to interpret. Only malachite could be identified in both cases. XRD spectra could not be interpreted because of the deficiency of peaks.

The limit of the original surface is well defined (interface of CP1 and CP2) but due to the fragility of the inner corrosion layers it was difficult to uncover.

Elements	O	Cu	Sn
Outer green layer (CP1)	+++	+++	nd
Inner green layer (CP4)	++	+	+++
Inner blue layer (CP5)	++	+	+++
Remnant metal phase	nd	+++	+

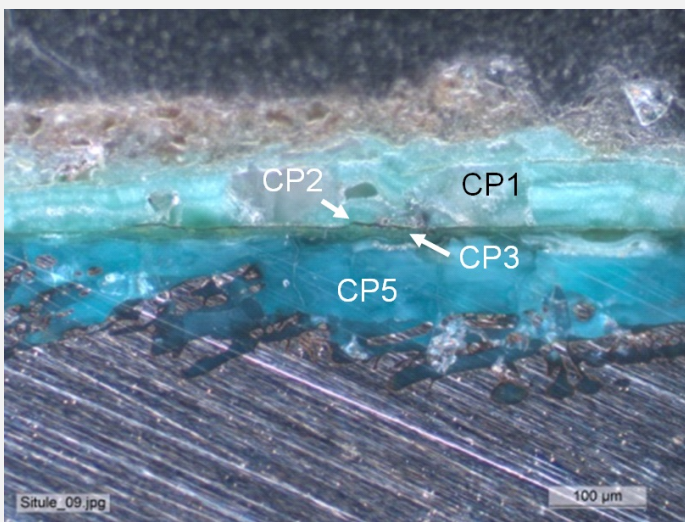
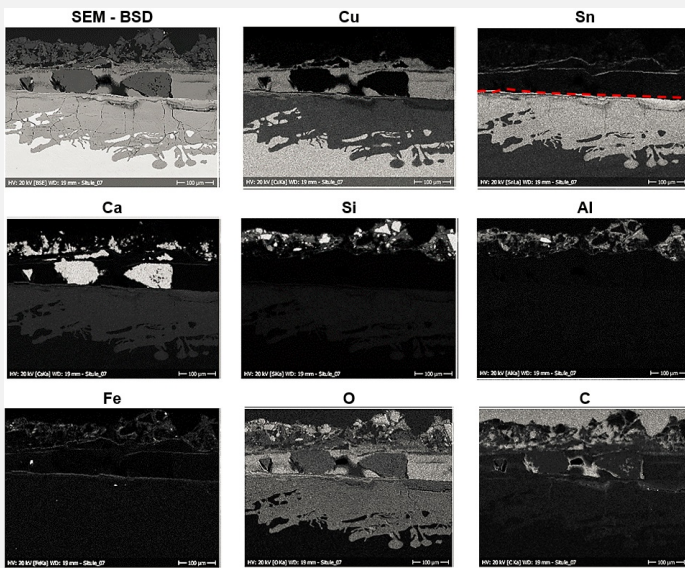
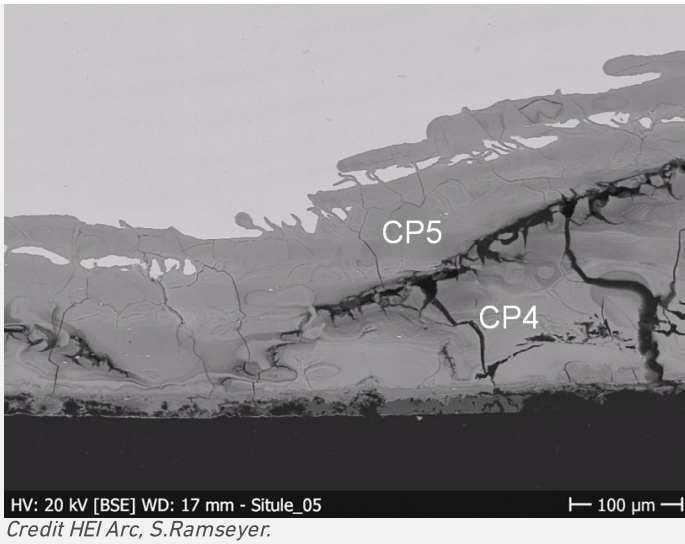
Table 2: Chemical composition of the corrosion crust from Fig. 10. SEM-EDS, Lab of Electronic Microscopy and Microanalysis, IMA (Néode) (+++: high concentration, ++ medium concentration, + low concentration, nd: not-detected).



Credit HE-Arc CR.

Fig. 10: Micrograph of the metal sample from Fig. 4, unetched, dark field, 50x. Areas of Fig. 11 (bottom, corresponding to the stratigraphy of Fig. 5) and Figs. 12 and 13 (top, corresponding to the stratigraphy of Fig. 6) are marked by a rectangle. Codes are those of Fig. 6,

Fig. 11: SEM image, BSE-mode of the metal sample from Fig. 10 (detail) showing cleavage between the inner blue (CP5) and green (CP4) layers of Fig. 6,



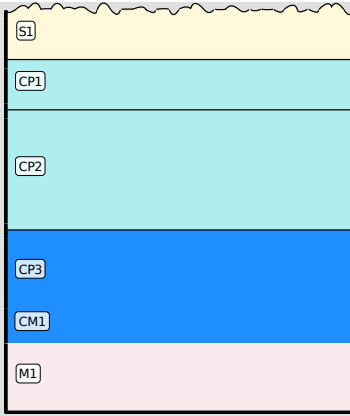
Credit HE-Arc CR.

Fig. 12: SEM image, SE-mode, and elemental chemical distribution of the selected area of Fig. 10. In red: the limit of the original surface highlighted by the enriched tin layer. Method of examination: SEM-EDS, Lab of Electronic Microscopy and Microanalysis, IMA (Néode), HEI Arc,

Fig. 13: Micrograph of the metal/corrosion interface (detail of Fig. 10) unetched, dark field, 100x. The outer layer (CP1 of Fig. 6) incorporates soil material and the thin dark layer (CP2 of Fig. 6) highlights the limit of the original surface,

Fig. 14: FTIR spectrum (ATR mode) of the inner blue layer compared to the silicate and malachite standard spectrum. Method of analysis: FTIR spectroscopy, HE- Arc CR,





✧ Synthesis of the binocular / cross-section examination of the corrosion structure

Based on the analyses carried out, the schematic representation of the stratigraphy of corrosion layers (Fig. 3) was corrected (additional e and i within the coding correspond to strata in contact with the environment (e) and internal strata (i)).

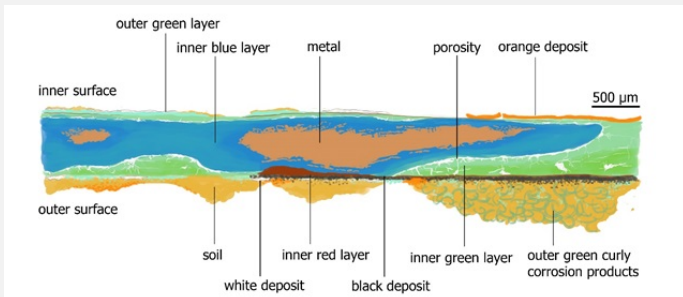


Fig. 16: Improved stratigraphic representation of the situla from visual observations and analyses,

Strata	Composition
Soil (S)	Ca, Si, Al, Fe
Black deposit (D1)	C
Orange deposit (D2)	Ferrous oxides
White deposit (D3)	Ca
Outer green curly corrosion product (CP1e)	Copper carbonates (curly malachite)
Inner red (CP2i)	Copper oxide (cuprite ?)
Outer green layer (CP3i)	Copper carbonates (malachite)
Inner green layer (CP4i)	Copper carbonates (?) + Sn
Inner blue layer (CP5i)	Copper carbonates (?) + Sn
Remnant metal phase (M)	Bronze (90%Cu, 10% Sn)

Credit HE-Arc CR, M-J.Scholl.

✧ Conclusion

The metal structure of this low-tin bronze shows extensive cold work and multiple annealing cycles with a final cold work. The total absence of inclusions highlights a highly developed knowledge in bronze metallurgy. The metal is much corroded. Transgranular corrosion is visible. The majority of the internal corrosion products are composed of copper carbonates that have replaced much of the metal. Curly malachite has developed in clusters on the outside of the surface. This pattern is characteristic of a long-term burial period. The presence of inner enriched Sn layers shows a decuprification phenomenon (dissolution of Cu). Because of the friable nature of the inner green layer that supports the limit of the original surface, as well as its cleavage with the blue layer underneath, the original surface has become very fragile. The corrosion is thought to be of type 1 according to Robbiola et al. 1998.

✧ References

References on object and sample

Reference object



1. Archeodunum (Gollion) (2009). Le Mormont : un sanctuaire des Helvètes en terre vaudoise vers 100 avant J.-C. Section de l'archéologie cantonale, Lausanne.

#### Reference sample

2. Scholl, M.-J (2013) Situle en bronze et anse en fer, EMT09/554.665, vers 100 av. J.-C., La Sarraz/Eclépens, Le Mormont (VD), Musée cantonal d'archéologie et d'histoire, Lausanne. Rapport d'intervention, Haute Ecole Arc de Conservation-restauration, Neuchâtel [not published].

3. Eggert, G. (2007) Pseudomorph or corrosion? The enigma of the curly malachite, in Metal07 - Proceedings of the International Conference on Metals Conservation, Degryny, C., Van Langh, R., Ankersmit, B. and Joosten, I. (eds), Rijksmuseum, Amsterdam (2007), 1, 57-60.

#### *References on analytic methods and interpretation*

4. Robbiola, L., Blengino, J.-M., Fiaud, C. (1998) Morphology and mechanisms of formation of natural patinas on archaeological Cu-Sn alloys, Corrosion Science, 40, 12, 2083-2111.