

CIRCULAR DOOR KNOCKER STRIKING PLATE – CU ALLOY – MODERN TIMES – SWITZERLAND

| | |
|---------------|---|
| Artefact name | Circular door knocker striking plate |
| Authors | Marianne. Senn (EMPA, Dübendorf, Zurich, Switzerland) & Christian. Degriigny (HE-Arc CR, Neuchâtel, Neuchâtel, Switzerland) |
| Url | /artefacts/682/ |

✧ The object



Credit HE-Arc CR.

Fig. 1: Circular base from a door knocker (after Benoît, 1994),

✧ Description and visual observation

| | |
|-----------------------------|--|
| Description of the artefact | Circular base no 2 (from a set of two) of a door knocker with a protruding lion head holding a hinge in his fangs, Ø.ext = 64cm. The circular base is covered by a gilded (?) decorative relief (Fig. 1, Benoit, 1994, 6). |
| Type of artefact | Architectural element |
| Origin | Door knocker of Lausanne cathedral, Lausanne, Vaud, Switzerland |
| Recovering date | None |
| Chronology category | Modern Times |
| chronology tpq | 1601 A.D. ▼ |
| chronology taq | 1700 A.D. ▼ |
| Chronology comment | 17th Century AD |

| | |
|---------------------------------|------------------------------------|
| Burial conditions / environment | Outdoor atmosphere |
| Artefact location | Lausanne cathedral, Lausanne, Vaud |
| Owner | Lausanne cathedral, Lausanne, Vaud |
| Inv. number | None |
| Recorded conservation data | Not conserved |

Complementary information

Nothing to report.

Study area(s)



Credit HE-Arc CR.

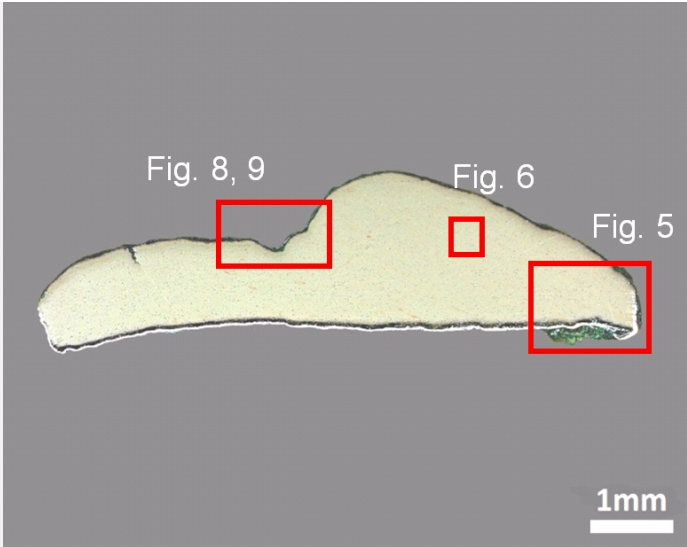
Fig. 2: Possible location of sampling area,

Binocular observation and representation of the corrosion structure

Stratigraphic representation: none.

MiCorr stratigraphy(ies) – Bi

Sample(s)



Credit HE-Arc CR.

Fig. 3: Micrograph of the cross-section of the sample taken from the circular base showing the location of Figs. 5 to 6 and 8 to 9,

| | |
|--------------------------|---|
| Description of sample | No information is given on where the sample has been taken. A supposed location is however illustrated in Fig. 2. The polished sample shows a well preserved metal surface with some cracks covered by a thin corrosion crust (Fig. 3). |
| Alloy | Cu Alloy |
| Technology | Rolled, annealed after cold working |
| Lab number of sample | MAH 94-156-001 |
| Sample location | Musées d'art et d'histoire, Genève, Geneva |
| Responsible institution | Musées d'art et d'histoire, Genève, Geneva |
| Date and aim of sampling | 1994, metallography and presence or not of a gilding treatment |

Complementary information

Nothing to report.

Analyses and results

Analyses performed:

Metallography (etched with ferric chloride reagent), Vickers hardness testing, LA-ICP-MS, SEM/EDS, Raman spectroscopy.

Non invasive analysis

Metal

Analysis by LA-ICP-MS (Table 1) indicates that the metal is a copper alloy. The high relative standard deviations (RSD) result from the heterogeneity of the metal (inclusions). The alloy differs from the quaternary alloy given in the report for the circular base considered here (Benoît 1994, p.18). It contains numerous inclusions of copper oxides (Figs. 5, 6, 8 and 9, Table 2) and heavy metals (Sn, Pb, Fig. 9 and Table 2) that are residues from the manufacturing process. In polarized light, the copper oxide inclusions appear

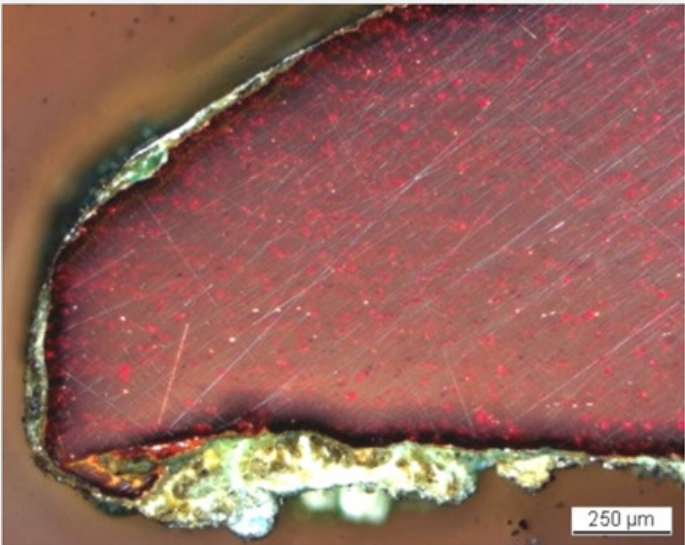
red (Figs. 5 and 8) while with SEM in BSE-mode they look light-grey (Fig. 9). Heavy metals inclusions appear white with SEM (BSE-mode, Fig. 9). Due to the rolling process the copper oxide inclusions are parallel to the longitudinal orientation of the sample (Figs. 5 and 6). They were identified as cuprite by Raman spectroscopy (Fig. 7). The etched alloy shows a structure of polygonal grains with annealing twins (Fig. 6). The grain size is variable. The average hardness of the alloy is HV1 80, which is quite high compared to the average hardness of a pure annealed copper of around HV1 40-50 (Schumann 1991, 627).

| Elements | Cu | Sb | Pb | Ag | Bi | Sn | Zn | Ni | As | S |
|----------|------|-----|------|-----|-------|----|----|----|----|---|
| mass% | 99.6 | 0.2 | 0.12 | 0.1 | 0.004 | < | < | < | < | < |
| RSD % | 0.3 | 112 | 132 | 1 | 112 | | | | | |

Table 1: Chemical composition of the metal. Method of analysis: LA-ICP-MS, Laboratory of Basic Aspects of Analytical Chemistry at the Faculty of Chemistry, University of Warsaw, PL.

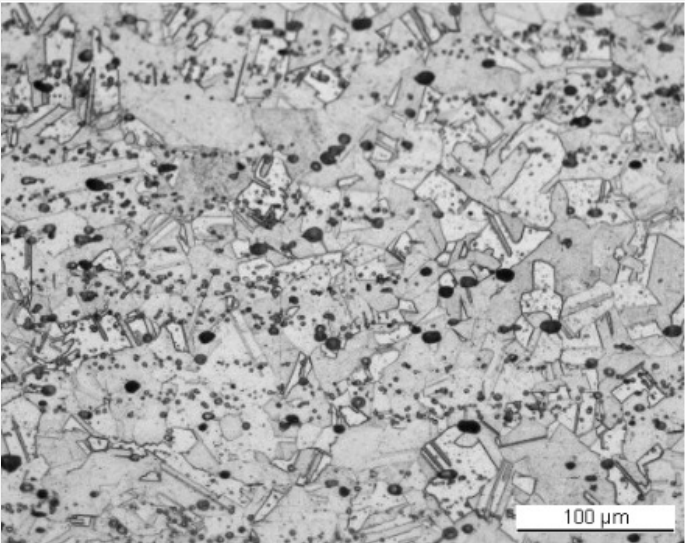
| Elements | O | Cu | Fe | Ni | Sn | Sb | Pb | Total |
|----------------------|----|----|----|----|----|-----|-----|-------|
| Light-grey inclusion | 10 | 86 | < | < | < | < | < | 96 |
| White inclusion 1 | 18 | 48 | 17 | 3 | 11 | 0.9 | 0.8 | 105 |
| White inclusion 2 | 13 | 8 | < | < | < | 34 | 44 | 99 |

Table 2: Chemical composition (mass %) of the inclusions (light-grey and white in Fig. 9) in the metal. Method of analysis: SEM/EDS, Laboratory of Analytical Chemistry, Empa.



Credit HE-Arc CR

Fig. 5: Micrograph of the metal sample from Fig. 3 (reversed picture), unetched, polarised light. The red copper oxide inclusions form rows in the copper alloy matrix.,



Credit HE-Arc CR.

Fig. 6: Micrograph of the metal sample from Fig. 3 (detail), etched, bright field. The metal shows a structure of polygonal and twinned grains. Copper oxide inclusions are visible as dark spots,

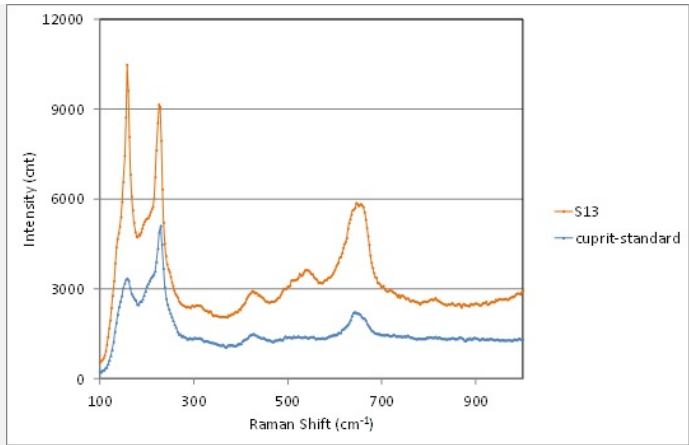


Fig. 7: Raman spectrum of a red inclusion (S13) of Fig. 5 compared to a cuprite standard spectrum. Settings: laser wavelength 532nm, acquisition time 100s, one accumulation, filter D2 (0.75-0.8mW), hole 500, slit 80, grating 600. Method of analysis: Raman spectroscopy. Lab of Swiss National Museum, Affoltern a. Albis ZH,

Credit SNM.

| | |
|----------------------|--|
| Microstructure | Polygonal and twinned grains, elongated inclusions |
| First metal element | Cu |
| Other metal elements | Ag, Sb, Pb |

Complementary information

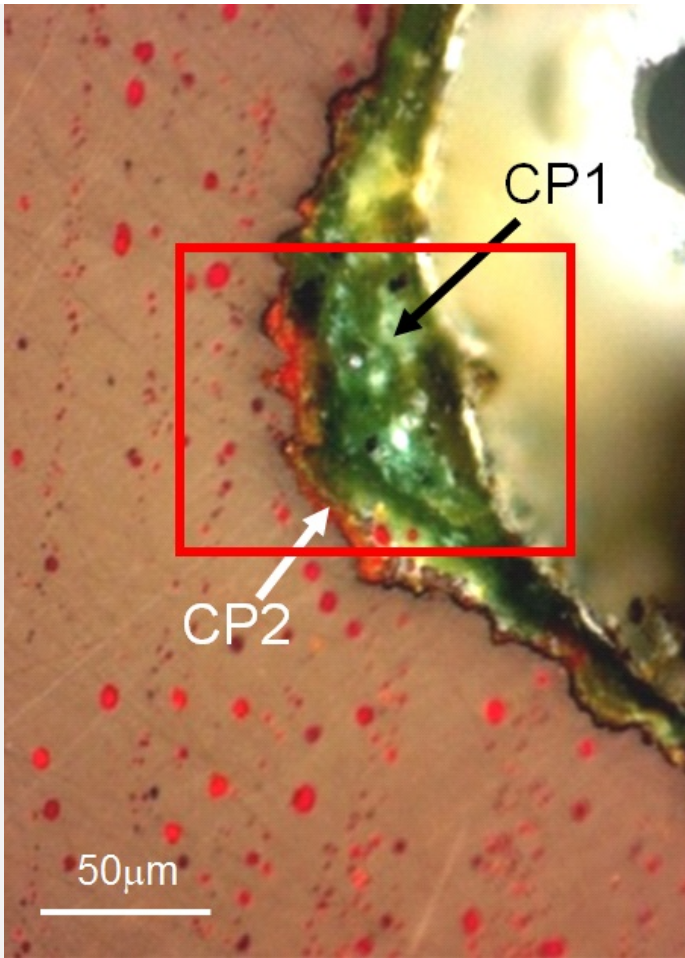
Nothing to report.

Corrosion layers

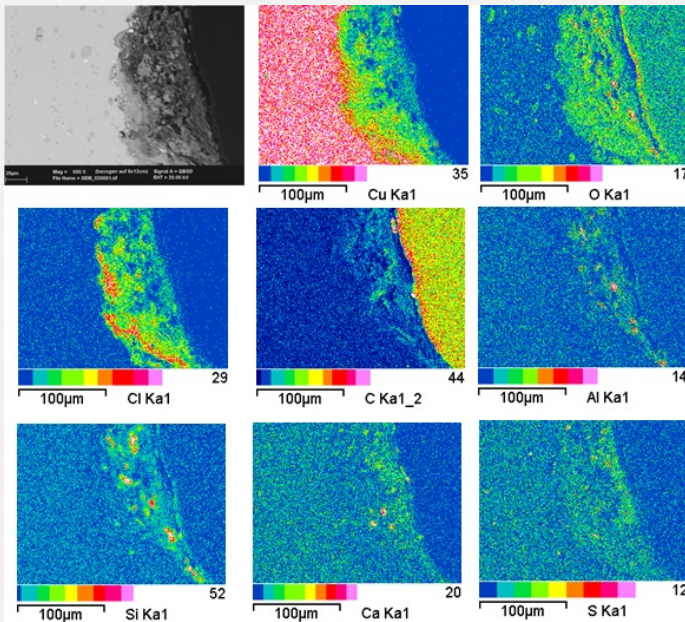
The average thickness of the corrosion crust is about 90µm, but may be thinner or thicker depending on the area of origin (Fig. 5). Under polarized light, we observe a multilayer system with a dense and thin inner red corrosion layer (CP2, probably cuprite/Cu₂O) on the metal (Fig. 8) containing chlorides (Fig. 9 and Table 3). This is followed by bands of heterogeneous green corrosion products (CP1, possibly copper chloride / sulphate / carbonate). This outer corrosion layer is contaminated with atmospheric components (Si, Al, Cl, C and O and perhaps gypsum particles (CaSO₄)) (Fig. 9).

| Elements | O | Si | Cl | Cu | Total |
|----------------------|----|----|----|----|-------|
| CP2, inner red layer | 11 | < | 23 | 60 | 94 |

Table 3: Chemical composition (mass %) of the inner corrosion layer (CP2). Method of analysis: SEM/EDS, Laboratory of Analytical Chemistry, Empa.



Credit HE-Arc CR.



Credit Empa.

Fig. 8: Micrograph of the metal sample from Fig. 3 (rotated by 90°) and corresponding to the stratigraphy of Fig. 4, polarised light. Metal with red copper oxide inclusions. The black particles in the green corrosion layer are quartz inclusions. The area selected for elemental chemical distribution (Fig. 9) is marked by a red rectangle,

Fig. 9: SEM image, BSE-mode, and elemental chemical distribution of the selected area of Fig. 8. Method of examination: SEM/EDS, Laboratory of Analytical Chemistry, Empa,

| | |
|----------------|---|
| Corrosion form | Uniform - pitting |
| Corrosion type | Mostly type I with locally type II (Robbiola) |

Complementary information

Nothing to report.

✧ MiCorr stratigraphy(ies) – CS

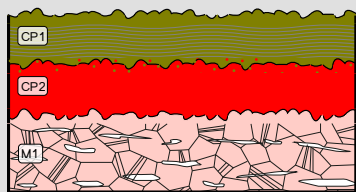


Fig. 4: Stratigraphic representation of the sample taken from the circular base in cross-section (dark field) using the MiCorr application. The characteristics of the strata are only accessible by clicking on the drawing that redirects you to the search tool by stratigraphy representation. This representation can be compared to Fig. 8, Credit HE-Arc CR.

✧ Synthesis of the binocular / cross-section examination of the corrosion structure

Corrected stratigraphic representation: none.

✧ Conclusion

The circular base of the door knocker consists of a rolled copper alloy that was annealed after cold working. The metal is rich in copper oxide inclusions. The corrosion is most likely composed of cuprite in proximity to the metal surface, followed by green copper corrosion products (possibly chlorides, carbonates or sulphates) on the outer surface which is also contaminated with gypsum and airborne particles. The presence of chlorides in the inner corrosion layers could be explained by contamination through handling. Soil elements are probably originating from airborne dust, whereas sulphur could come from urban SO₂ pollution. No trace of gilding was observed. In this case the corrosion is mostly of type 1, but can be locally of type 2 after Robbiola et al. 1998.

✧ References

References on object and sample

1. Benoît, C. (1994) Cathédrale de Lausanne: conservation de deux appliques en bronze à tête de lion avec anneau mobile et encadrement circulaire. Rapport de travail, non publié.
2. Rapport d'examen (1998) Laboratoire Musées d'Art et d'Histoire, Genève No 94-156-1/2.

References on analytic methods and interpretation

3. Robbiola, L., Blengino, J-M., Fiaud, C. (1998) Morphology and mechanisms of formation of natural patinas on archaeological Cu-Sn alloys, Corrosion Science, 40, 12, 2083-2111.
4. Schumann, H. (1991) Metallographie, Leipzig.